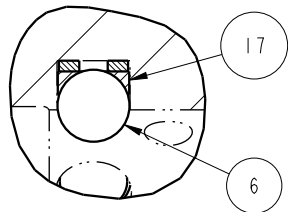
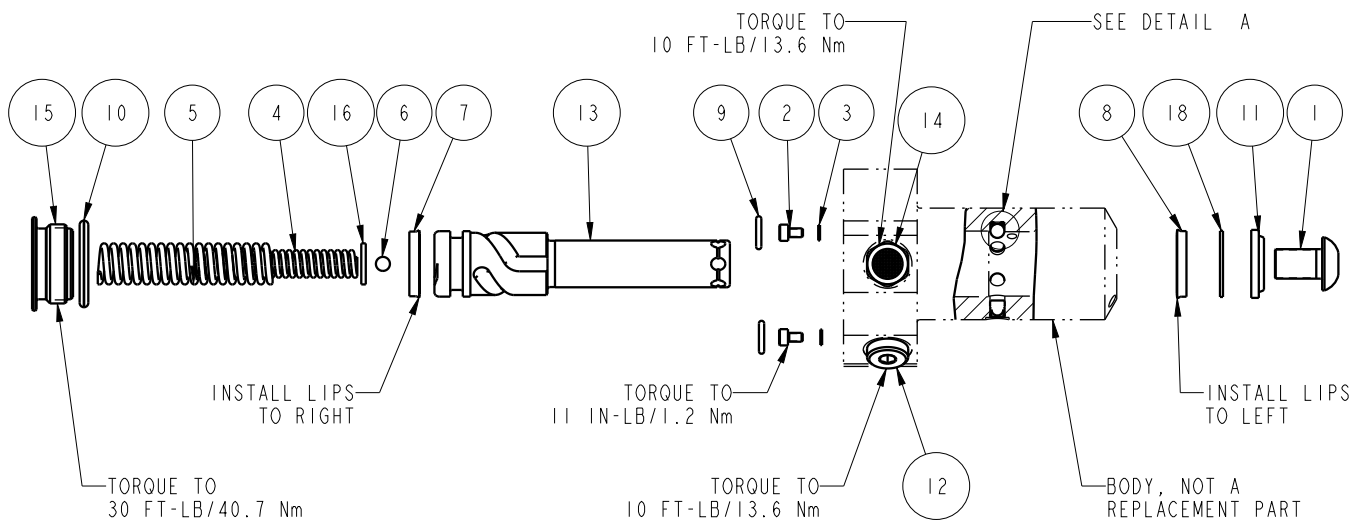



NO	QTY	PART NO	DESCRIPTION	STD SEAL KIT	FKM SEAL KIT	SPRING KIT
1	1	21500009	SCREW, CAP, BTNH, M10 X 16, ALY			
2	2	21500018	SCREW, CAP, SOCH, M3 X 5, ALY			
3	2	21500200	WASHER			
4	1	23311013	SPRING, COMPRESSION			X
5	1	23313008	SPRING, COMPRESSION			X
6	4	23600011	BALL, STEEL, ALLOY, .187	X	X	X
7	1	39010015	SEAL, BEVEL, 11/16 x 3/32 x 7/8	X	39052011	
8	1	39010020	SEAL, BEVEL W/HEEL INSERT, 5/8 x 1/8 x 7/8	X	39V10020	
9	2	39050042	O-RING, (-011)	X	39051025	X
10	1	39051031	O-RING, (-912)	X	X	X
11	1	39053001	WIPER, SNAP-IN, (5/8)	X	X	
12	1	43068004	PLUG, SOCH, G1/8			
13	1	47510904	PLUNGER, SC, HS, 4.9KN, RH			
14	1	49001904	BREATHER, 1/8 BSPP			
15	1	81400029	RETAINER, SC, HS, 1100			
16	1	81590901	DISK, PIVOT, BALL, SC, 1100, SA			X
17	3	90199957	ASSY, BALLSEAT, SC, 1100	X	X	
18	1	39F54001	BU RING, (-208 CUSTOM)	X	X	
N/A	N/A	60414302	KIT, SEAL, STANDARD			
N/A	N/A	6V414302	KIT, SEAL, FKM			
N/A	N/A	61414002	KIT, SPRING			



DETAIL A
SCALE 2.000

PARTS LIST	 VEKTEK VEKTEK, INC. 1334 E. SIXTH AVE. P.O. BOX 625 EMPORIA, KS. 66801 U.S.A.
	ASSEMBLIES AFFECTED 41420511
PARTS LIST, ASSY, SC, BF, TC, 4.9KN, SA, RH	
SIZE A	MPL1429 REV C

C	5279	RELEASE	ALS	4/22/24
REV	IN ACCORDANCE WITH ECN	EFFECTIVE DATE	REVISED BY	DATE
DRW BY:	DRAWING STATUS: Released			
DATE: 03/21/13	PRODUCTION APPROVED FOR RELEASED STATUS ONLY			

SHEET 1 OF 1